

# Corvidae Co-op

## Unit G

**\$170K\* (studio)**

**\$2,500\*\*** Down Payment

**328 SF** Private

**1,500 SF** Shared

**~ \$1,800/month** including  
Mortgage + HOA dues + utilities



Join our community! With cooperative ownership, you'll have your own private unit, along with beautiful common spaces to share with your neighbors. Living at Corvidae, you'll build equity over time and put down roots in your neighborhood.

\*Subsidized unit is income-restricted, with an income cap of \$84,000 per year, after retirement benefit deductions.

\*\*For those earning over \$70,000, the minimum down payment is \$15,000.

Contact [Ieland@frolic.community](mailto:Ieland@frolic.community) (206-992-7434)

frolic community

allied8  
COMMUNITY PARTNER

URBANBLACK

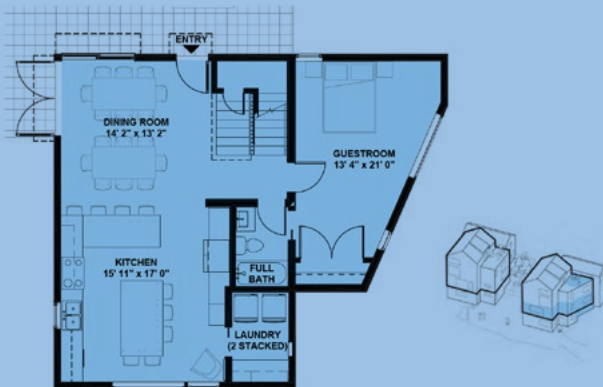




# Corvidae Co-op

## Common Spaces

In addition to their private units, residents at Corvidae share an outdoor courtyard, two spacious kitchens for communal meals, laundry and personal storage areas, and a guest suite for friends and family who come to visit.



Contact [Ieland@frolic.community](mailto:Ieland@frolic.community) (206-992-7434)

frolic community

allied8

URBANBLACK