

# CORVIDAE COOPERATIVE

Exterior Renderings



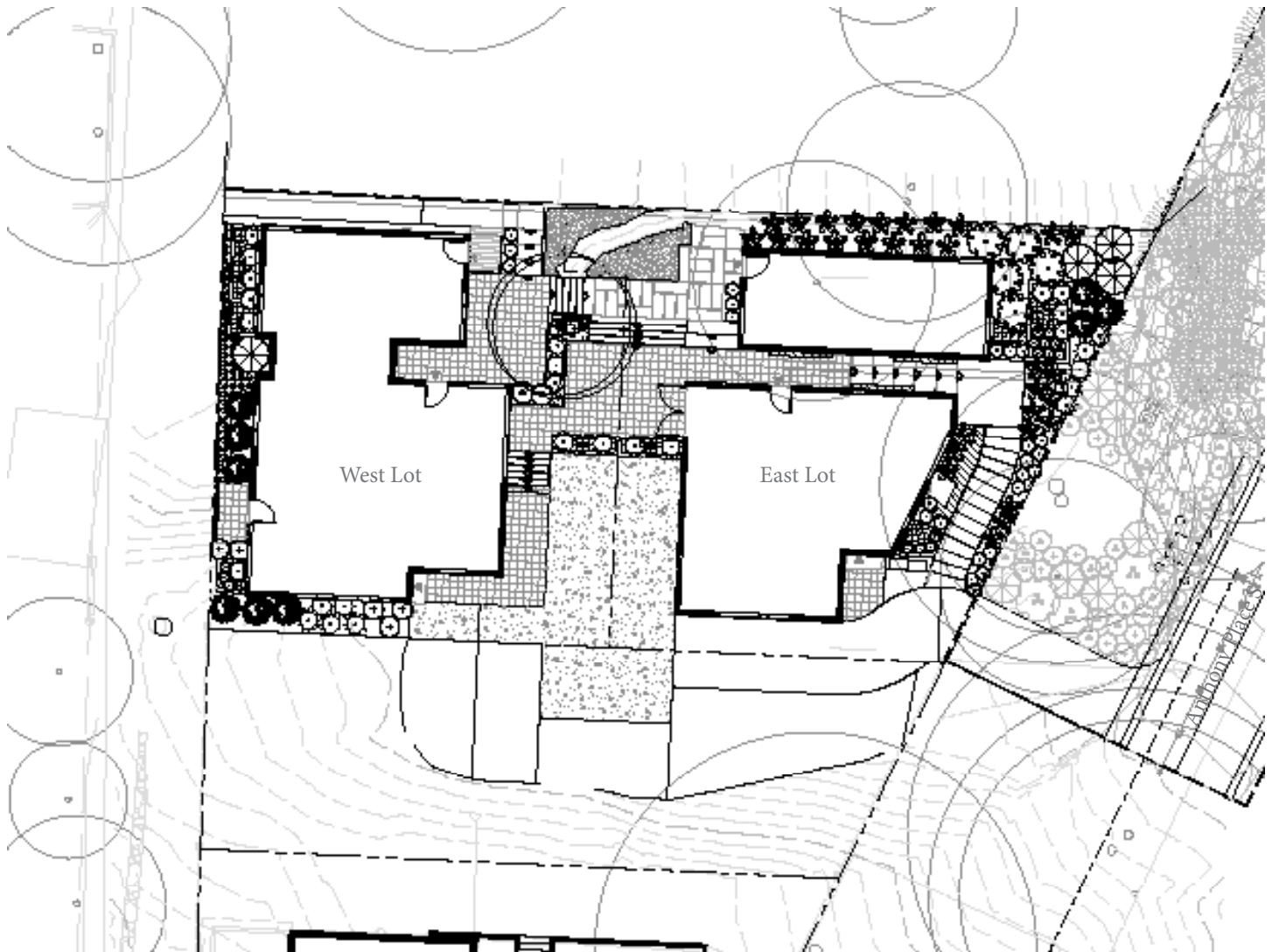
Common Courtyard



Entrance into Common Courtyard from the East Lot

# CORVIDAE COOPERATIVE

## Site Plan



### Notes:

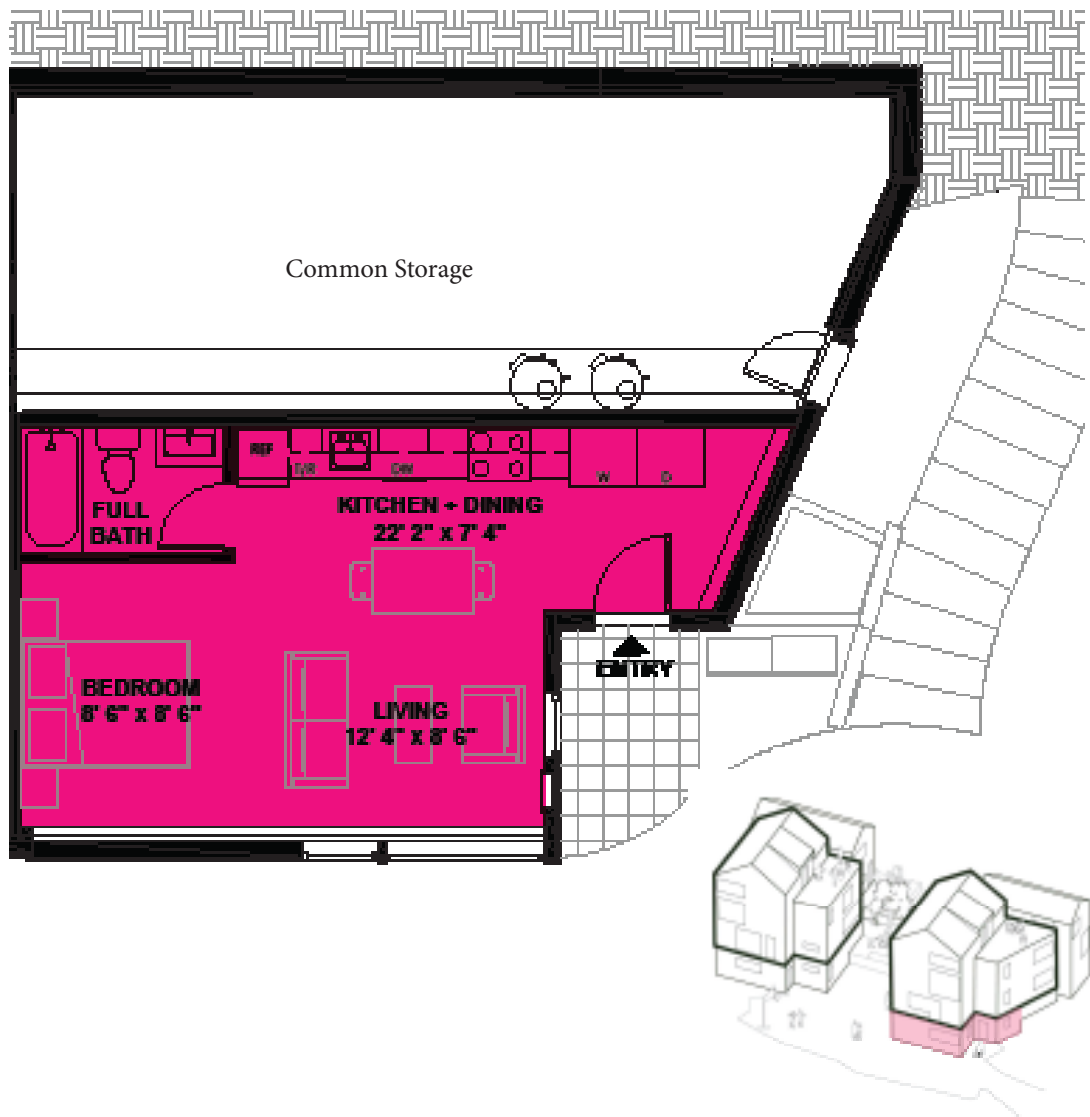
1. Both the East and West Lot are under common ownership by the Co-op.
2. Shared driveway access for both the West and East Lot is also shared with the South Neighbor

# CORVIDAE COOPERATIVE

## UNIT A (Studio - East Lot)

Share Price	\$300,000
Co-op Fees	\$911/mo (See breakdown in note #1, below)
Unit Size	396 Sq Ft

- Notes:
1. Co-op Fees include utilities with internet, property taxes, insurance, property management/admin, maintenance, operating/replace reserves and co-op mortgage. Personal mortgage is in addition to co-op fees.
  2. Stacked washer/dryer units provided in unit.
  3. Contact Frolic (team@frolic.community) and/or Leah Martin (leah@allied8.com) for more information regarding total monthly costs, floor plans, co-op bylaws and construction site visits.
  4. Construction completion projected for Spring of 2024.

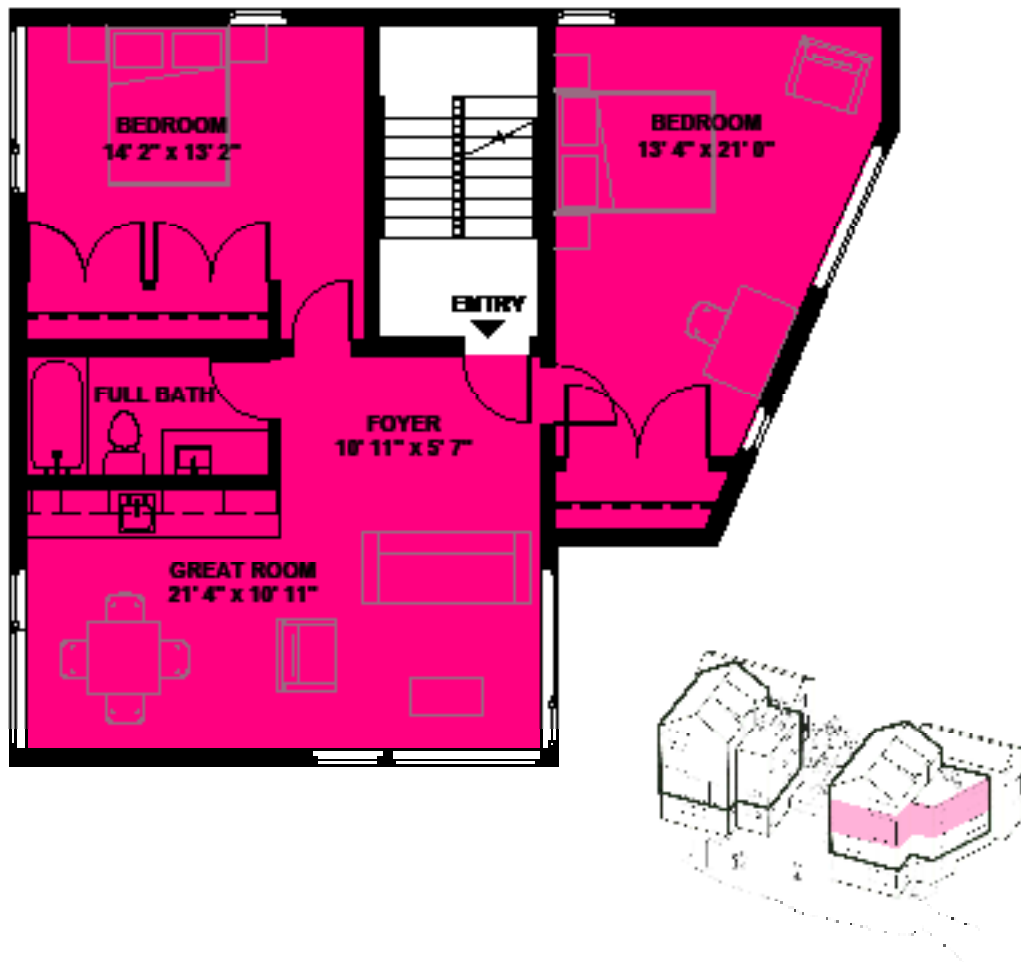


# CORVIDAE COOPERATIVE

## UNIT B (2 Bedroom Suite - East Lot)

Share Price	\$468,000
Co-op Fees	\$1,291/mo (See breakdown in note #1, below)
Unit Size	807 Sq Ft

- Notes:
1. Co-op Fees include utilities with internet, property taxes, insurance, property management/admin, maintenance, operating/replace reserves and co-op mortgage. Personal mortgage is in addition to co-op fees.
  2. Suites include a private kitchenette plus full kitchens in common areas. See example in attached rendering.
  3. Contact Frolic (team@frolic.community) and/or Leah Martin (leah@allied8.com) for more information regarding total monthly costs, floor plans, co-op bylaws and construction site visits.
  4. Construction completion projected for Spring of 2024.

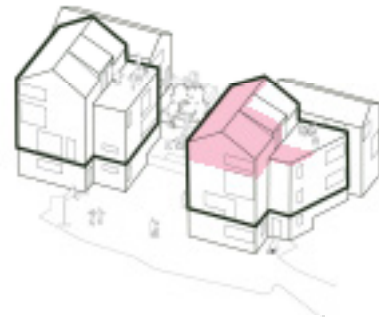
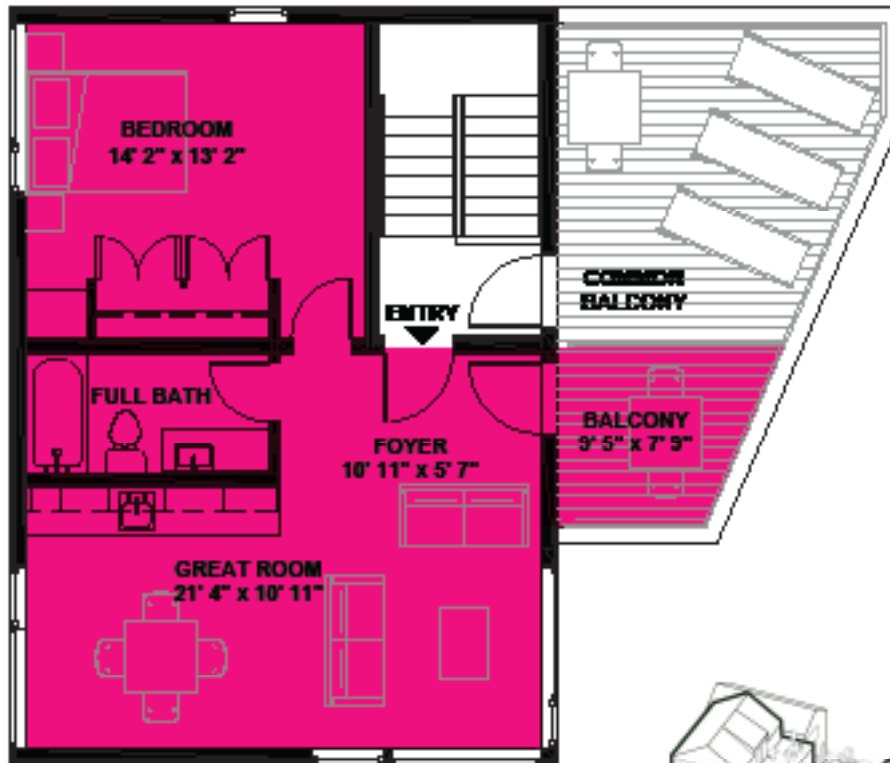


# CORVIDAE COOPERATIVE

## UNIT C (1 Bedroom Suite - East Lot)

Share Price	\$365,000
Co-op Fees	\$1,126/mo (See breakdown in note #1, below)
Unit Size	563 Sq Ft

- Notes:
1. Co-op Fees include utilities with internet, property taxes, insurance, property management/admin, maintenance, operating/replace reserves and co-op mortgage. Personal mortgage is in addition to co-op fees.
  2. Suites include a private kitchenette plus full kitchens in common areas. See example in attached rendering.
  3. Contact Frolic (team@frolic.community) and/or Leah Martin (leah@allied8.com) for more information regarding total monthly costs, floor plans, co-op bylaws and construction site visits.
  4. Construction completion projected for Spring of 2024.



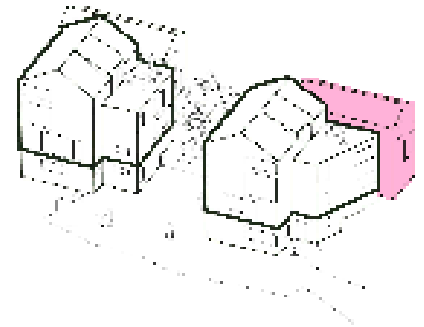
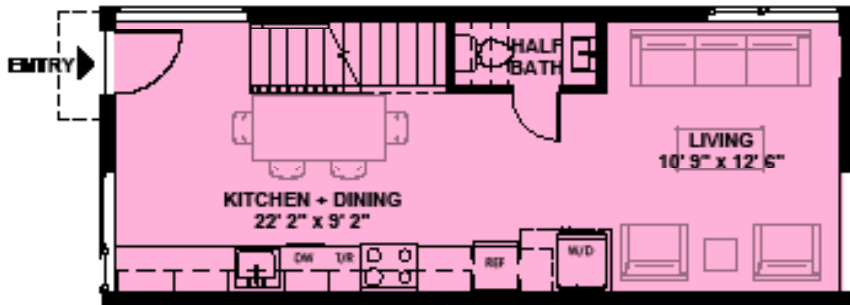
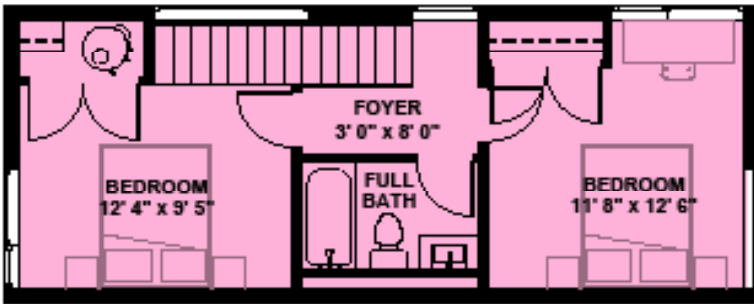


# CORVIDAE COOPERATIVE

## UNIT D (2 Bedroom Cottage - East Lot)

Share Price	\$605,000
Co-op Fees	\$1,510/mo (See breakdown in note #1, below)
Unit Size	944 Sq Ft

- Notes:
1. Co-op Fees include utilities with internet, property taxes, insurance, property management/admin, maintenance, operating/replace reserves and co-op mortgage. Personal mortgage is in addition to co-op fees.
  2. Stacked washer/dryer units provided in unit.
  3. Contact Frolic (team@frolic.community) and/or Leah Martin (leah@allied8.com) for more information regarding total monthly costs, floor plans, co-op bylaws and construction site visits.
  4. Construction completion projected for Spring of 2024.

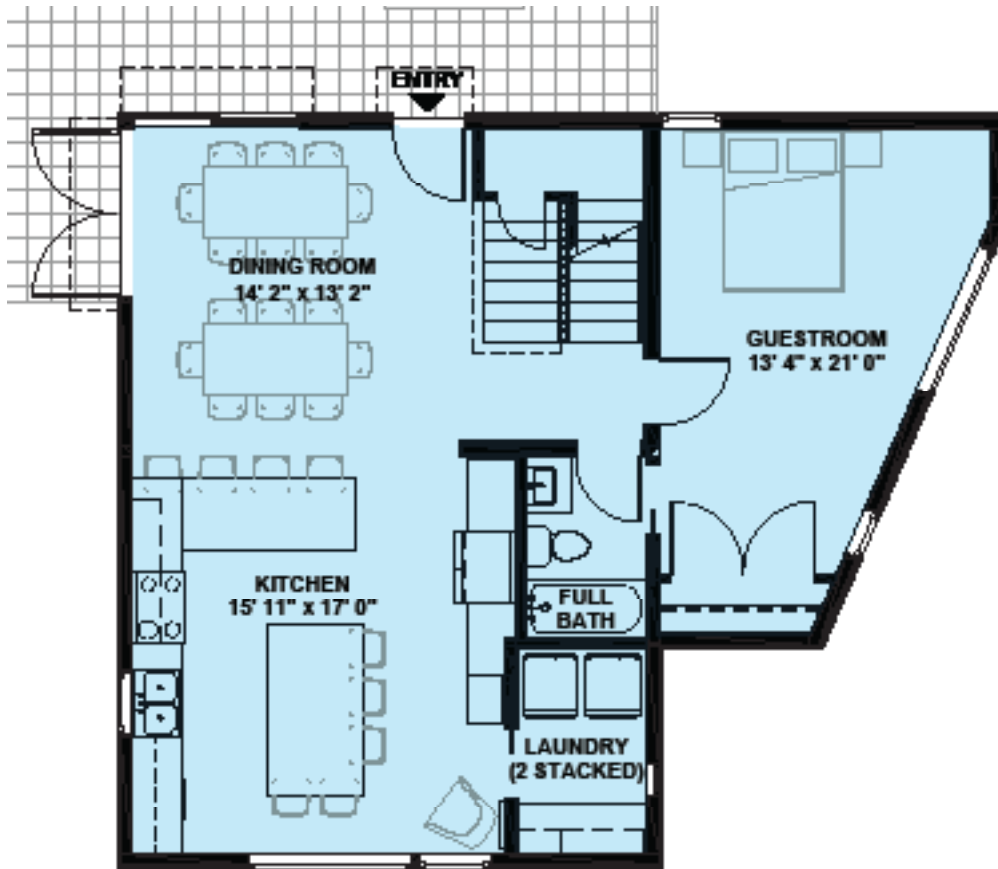


# CORVIDAE COOPERATIVE

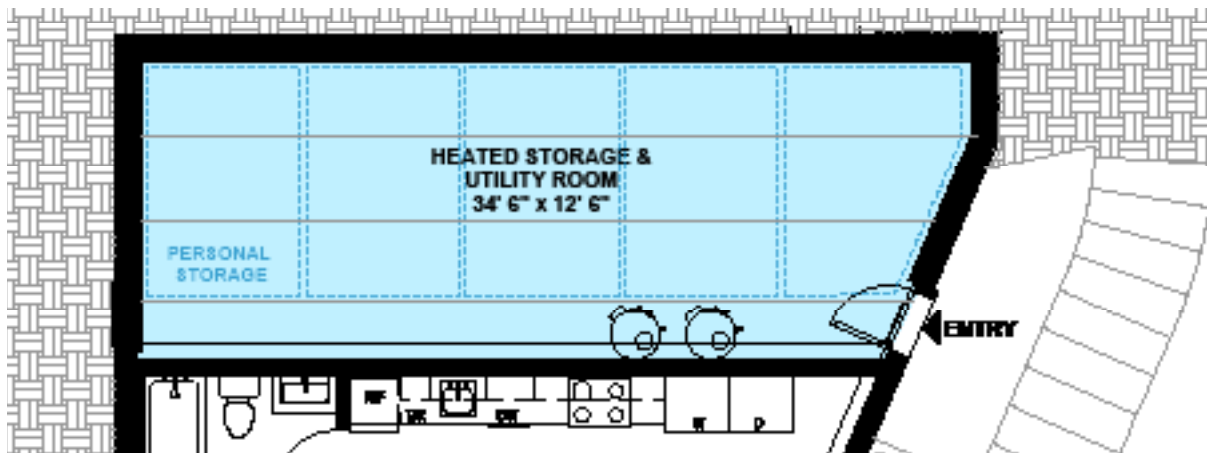
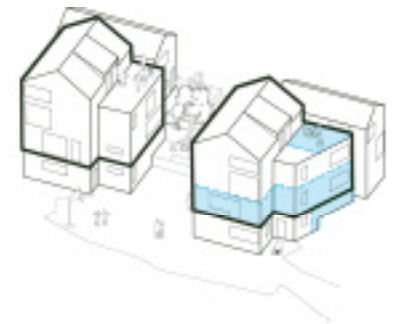
## Common Area - East Lot

Kitchen + Dining	Large enough to accomodate community meal or event (24 ppl)
Guest Room	Sleeping quarters for friends/family or flex room when not used by guests
Laundry	2 stackable laudry stations reserved for Suite owners
Full Bath	Preference for guests, then suite owners
View Deck	Territorial & Mountain Views
Storage	5 personal open storage areas (low ceilings)

Note: Both East Lot and West Lot common areas are accessible to entry co-op.



Ground Floor



Basement

# CORVIDAE COOPERATIVE

Common Kitchen - East Lot



East Common Kitchen/Dining Looking South



East Common Kitchen/Dining Looking North

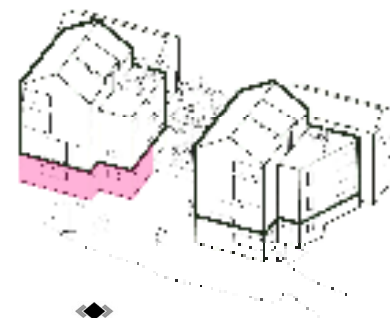
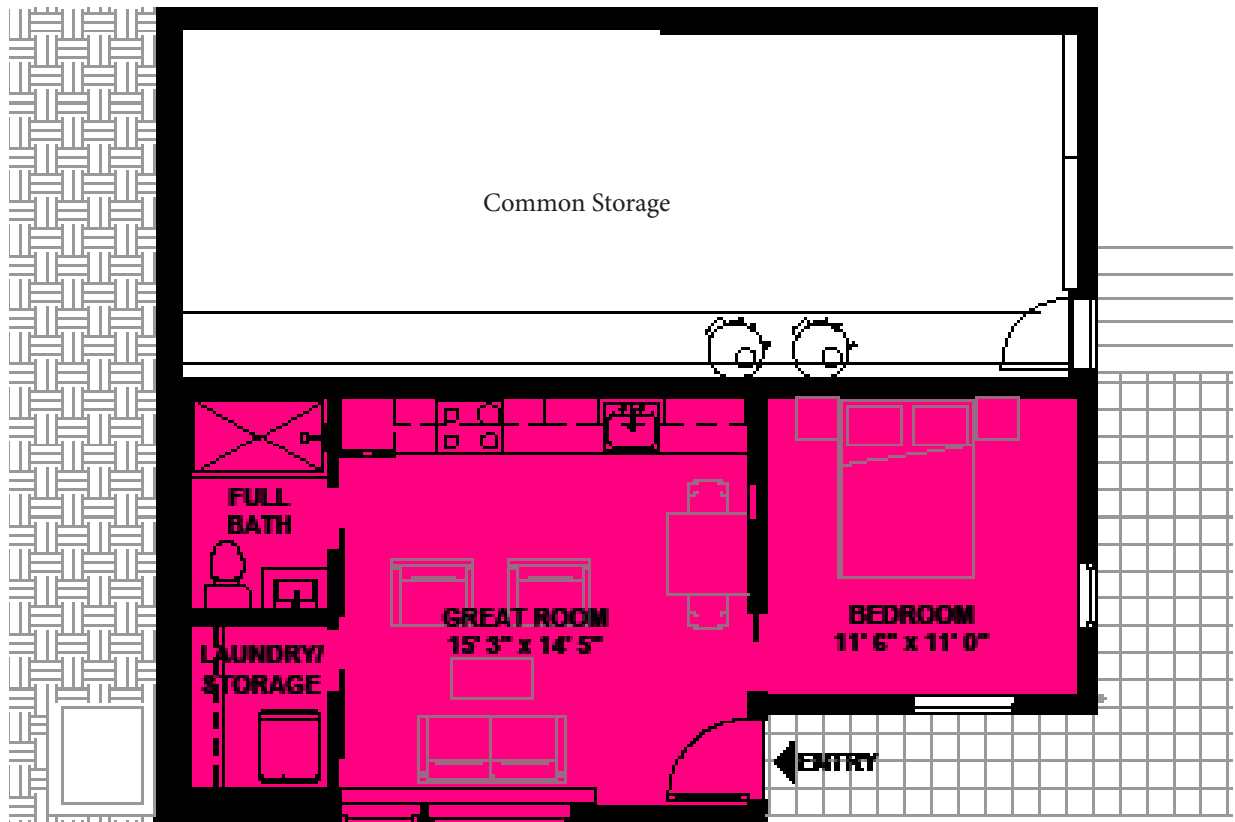


# CORVIDAE COOPERATIVE

## UNIT E (1 Bedroom - West Lot)

Share Price	\$190,000 (Subsidized unit, prices subject to change based on buyer income)
Co-op Fees	\$972/mo (See breakdown in note #1, below)
Unit Size	452 Sq Ft

- Notes:
1. Co-op Fees include utilities with internet, property taxes, insurance, property management/admin, maintenance, operating/replacement reserves and co-op mortgage. Personal mortgage is in addition to co-op fees.
  2. Stacked washer/dryer units provided in unit.
  3. Contact Frolic (team@frolic.community) and/or Leah Martin (leah@allied8.com) for more information regarding total monthly costs, floor plans, co-op bylaws and construction site visits.
  4. Construction completion projected for Spring of 2024.



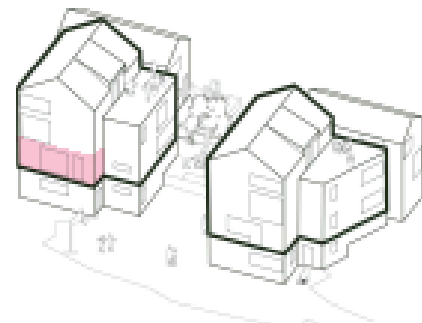
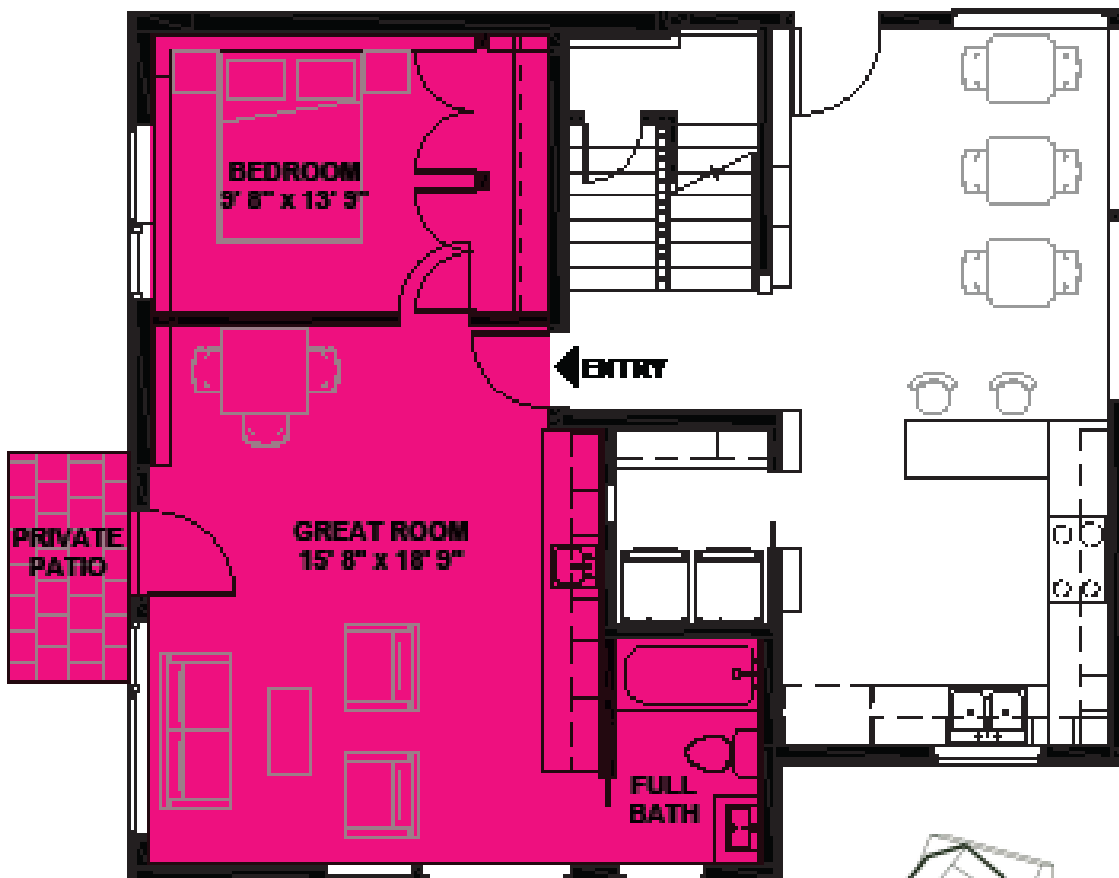
# CORVIDAE COOPERATIVE

## UNIT F (1 Bedroom Suite - West Lot)

Share Price	\$355,000
Co-op Fees	\$1,043/mo (See breakdown in note #1, below)
Unit Size	485 Sq Ft

### Notes:

1. Co-op Fees include utilities with internet, property taxes, insurance, property management/admin, maintenance, operating/replace reserves and co-op mortgage. Personal mortgage is in addition to co-op fees.
2. Suites include private kitchenette plus full kitchens in common areas. See example in attached rendering.
3. Contact Frolic (team@frolic.community) and/or Leah Martin (leah@allied8.com) for more information regarding total monthly costs, floor plans, co-op bylaws and construction site visits.
4. Construction completion projected for Spring of 2024.



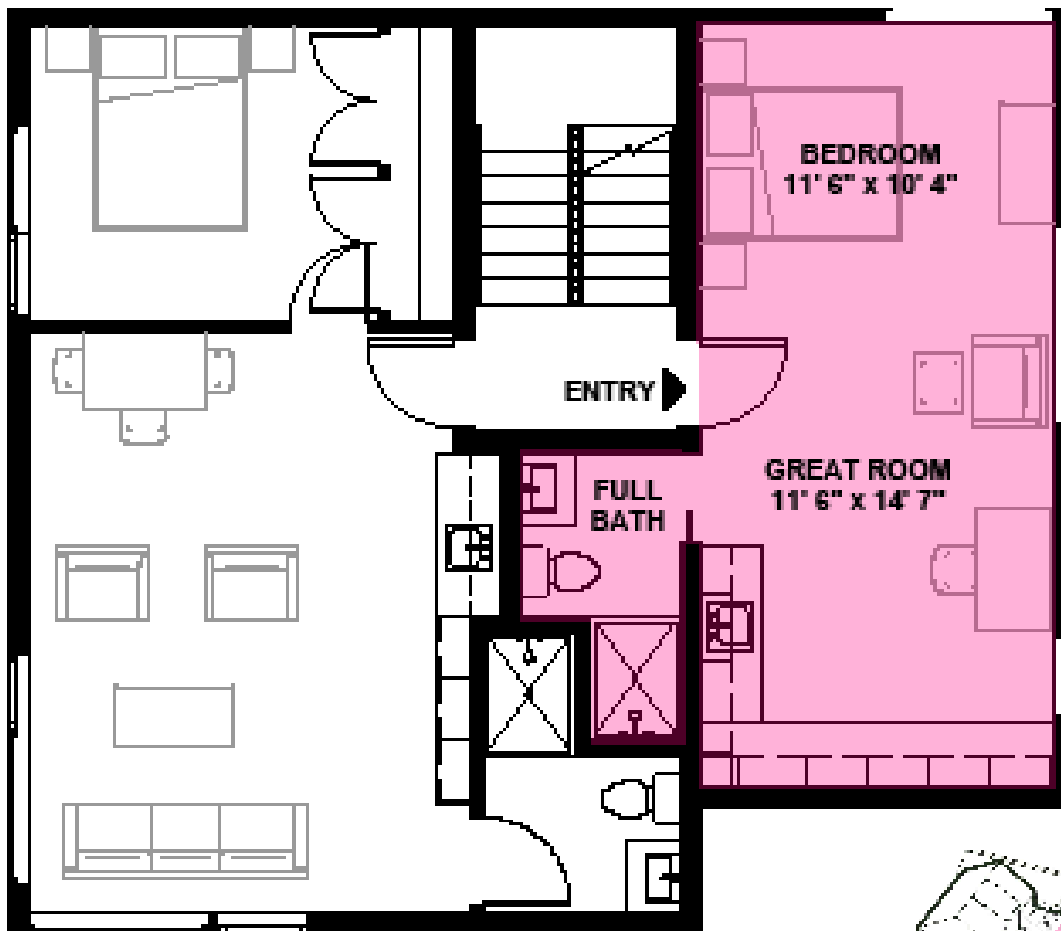
# CORVIDAE COOPERATIVE

## UNIT G (Studio Suite - West Lot)

Share Price	\$170,000 (Subsidized unit, prices subject to change based on buyer income)
Co-op Fees	\$796/mo (See breakdown in note #1, below)
Unit Size	346 Sq Ft

### Notes:

1. Co-op Fees include utilities with internet, property taxes, insurance, property management/admin, maintenance, operating/replace reserves and co-op mortgage. Personal mortgage is in addition to co-op fees.
2. Suites include private kitchenette plus full kitchens in common areas. See example in attached rendering.
3. Contact Frolic ([team@frolic.community](mailto:team@frolic.community)) and/or Leah Martin ([leah@allied8.com](mailto:leah@allied8.com)) for more information regarding total monthly costs, floor plans, co-op bylaws and construction site visits.
4. Construction completion projected for Spring of 2024.



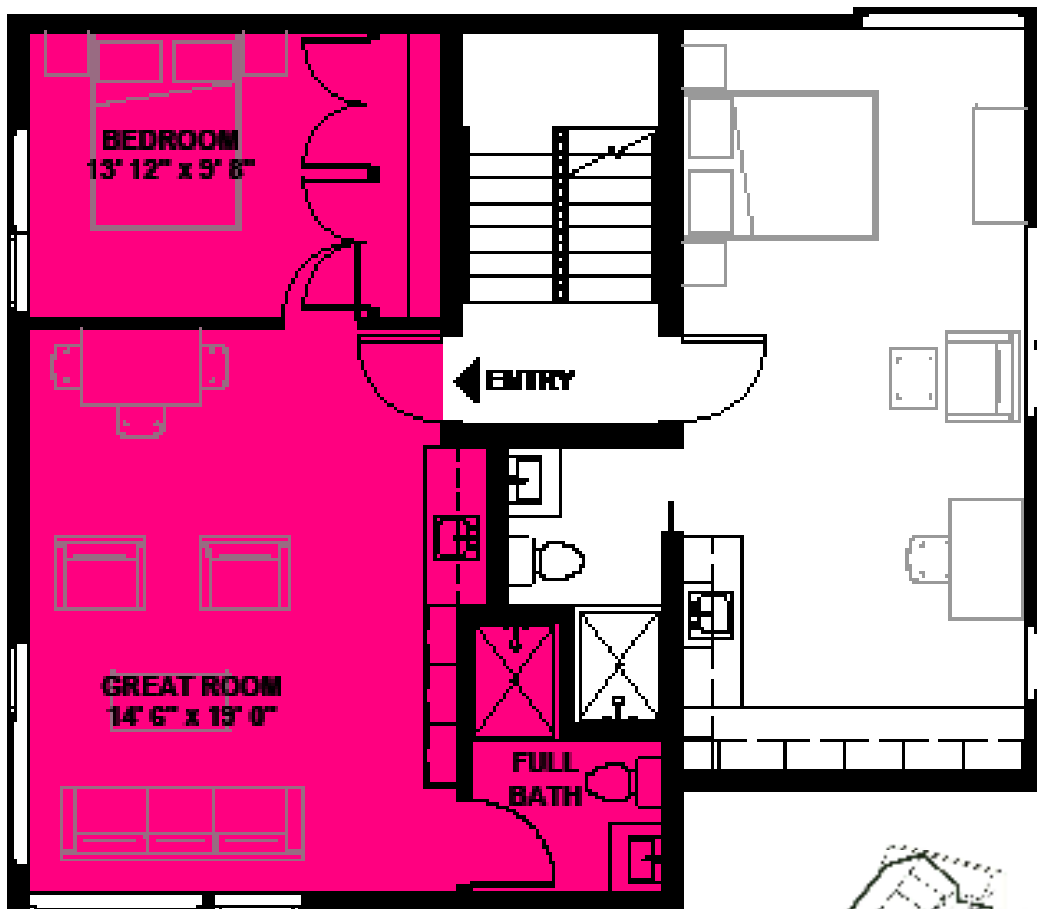
# CORVIDAE COOPERATIVE

## UNIT H (1 Bedroom - West Lot)

Share Price	\$355,000
Co-op Fees	\$1,023/mo (See breakdown in note #1, below)
Unit Size	476 Sq Ft

### Notes:

1. Co-op Fees include utilities with internet, property taxes and insurance, property management/admin, maintenance, operating/replace reserves and co-op mortgage. Personal mortgage is in addition to co-op fees.
2. Suites include private kitchenette plus full kitchens in common areas. See example in attached rendering.
3. Contact Frolic (team@frolic.community) and/or Leah Martin (leah@allied8.com) for more information regarding total monthly costs, floor plans, co-op bylaws and construction site visits.
4. Construction completion projected for Spring of 2024.

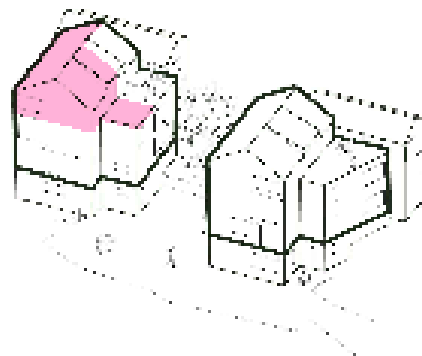
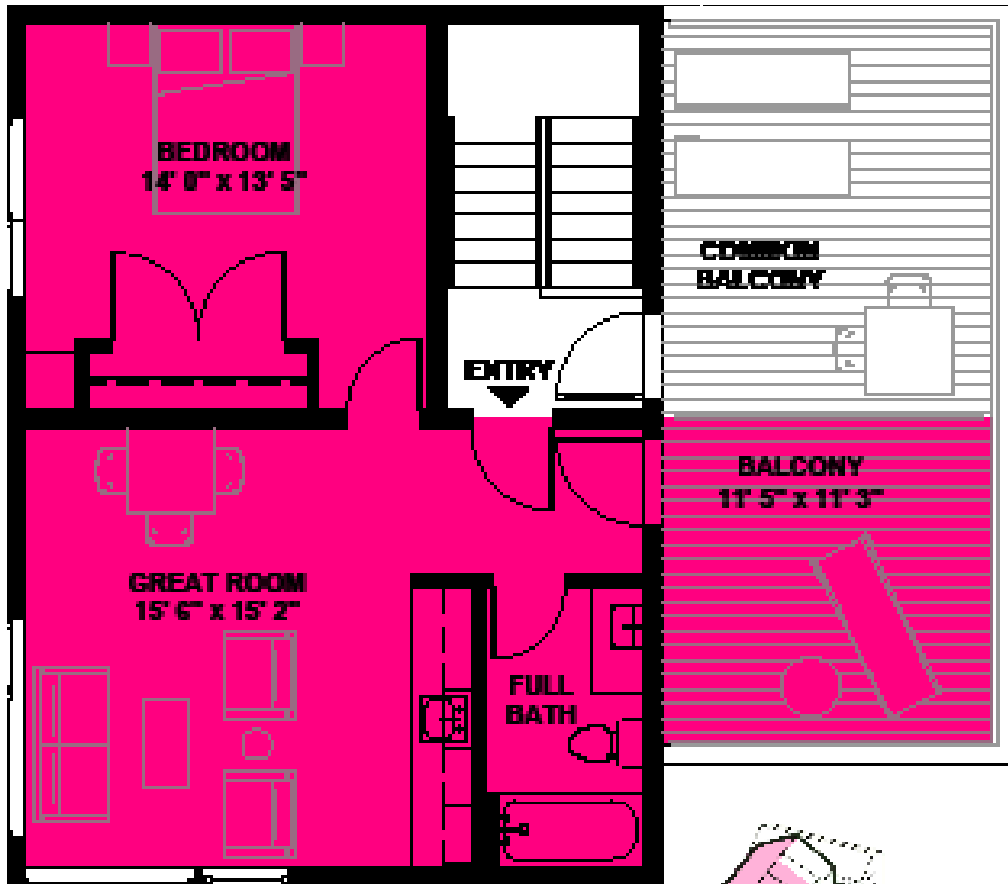


# CORVIDAE COOPERATIVE

## UNIT J (1 Bedroom Suite - West Lot)

Share Price	\$365,000
Co-op Fees	\$1,054/mo (See breakdown in note #1, below)
Unit Size	527 Sq Ft

- Notes:
1. Co-op Fees include utilities with internet, property taxes, insurance, property management/admin, maintenance, operating/replacement reserves and co-op mortgage. Personal mortgage is in addition to co-op fees.
  2. Suites include private kitchenette plus full kitchens in common areas. See example in attached rendering.
  3. Contact Frolic (team@frolic.community) and/or Leah Martin (leah@allied8.com) for more information regarding total monthly costs, floor plans, co-op bylaws and construction site visits.
  4. Construction completion projected for Spring of 2024.



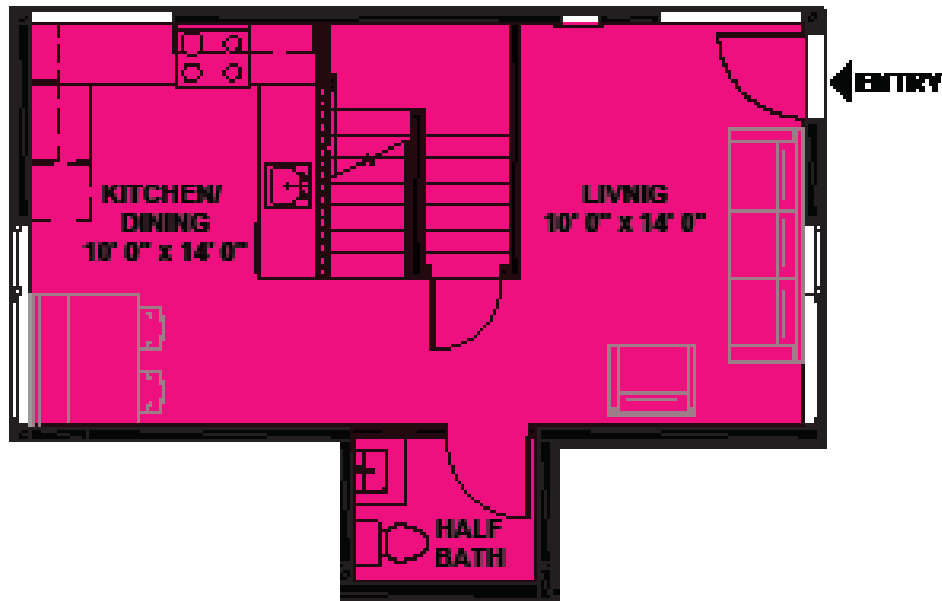
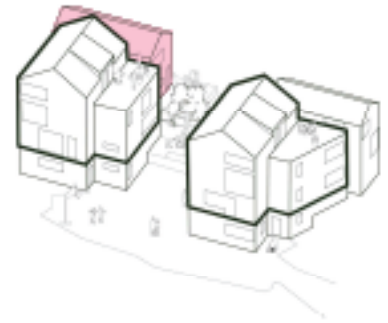
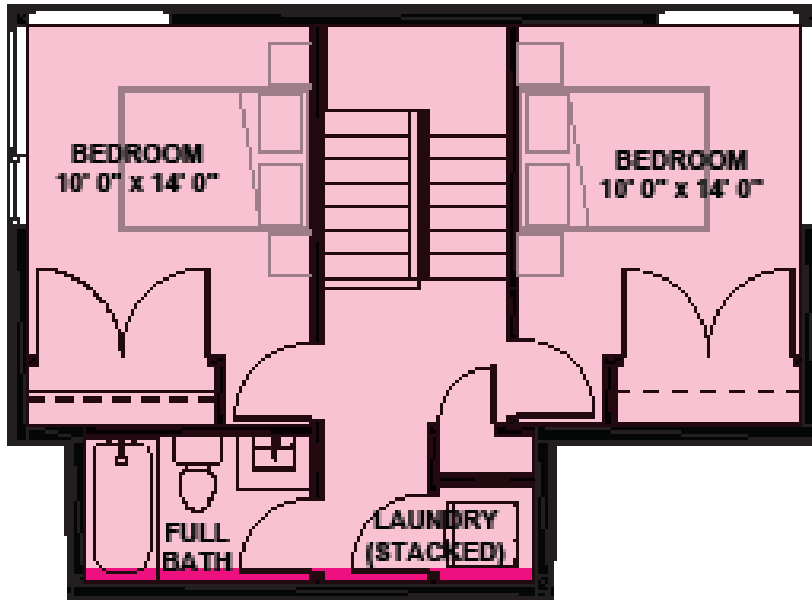


# CORVIDAE COOPERATIVE

## UNIT K (2 Bedroom Cottage - West Lot)

Share Price	\$605,000
Co-op Fees	\$1,573/mo (See breakdown in note #1, below)
Unit Size	983 Sq Ft

- Notes:
1. Co-op Fees include utilities with internet, property taxes, insurance, property management/admin, maintenance, operating/replace reserves and co-op mortgage. Personal mortgage is in addition to co-op fees.
  2. Stacked washer/dryer units provided in unit.
  3. Contact Frolic (team@frolic.community) and/or Leah Martin (leah@allied8.com) for more information regarding total monthly costs, floor plans, co-op bylaws and construction site visits.
  4. Construction completion projected for Spring of 2024.

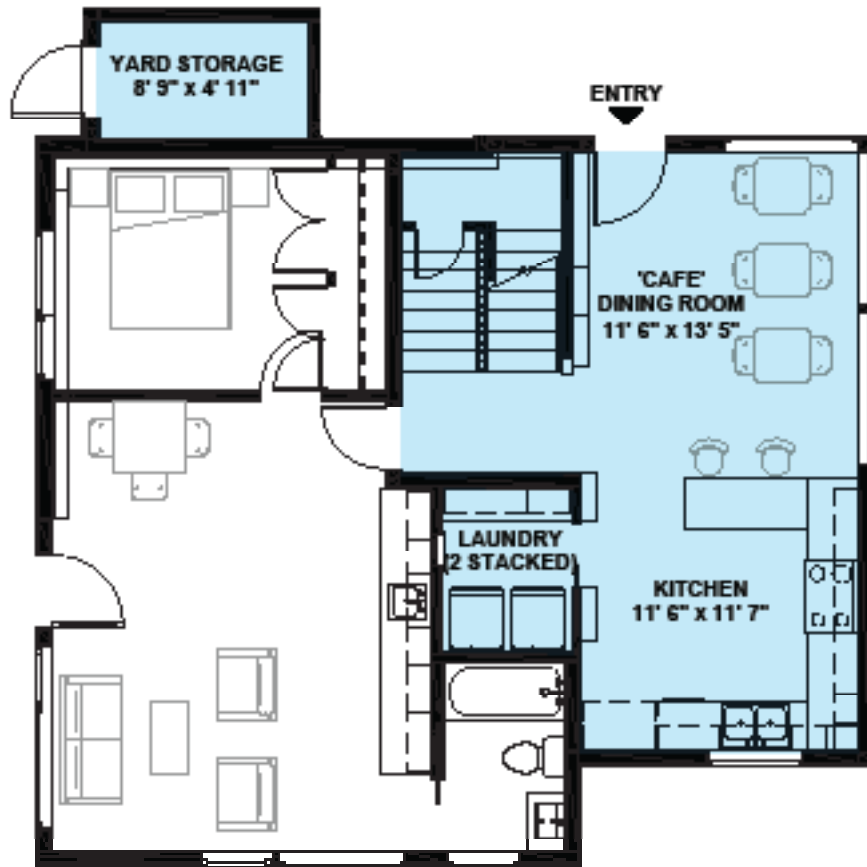


# CORVIDAE COOPERATIVE

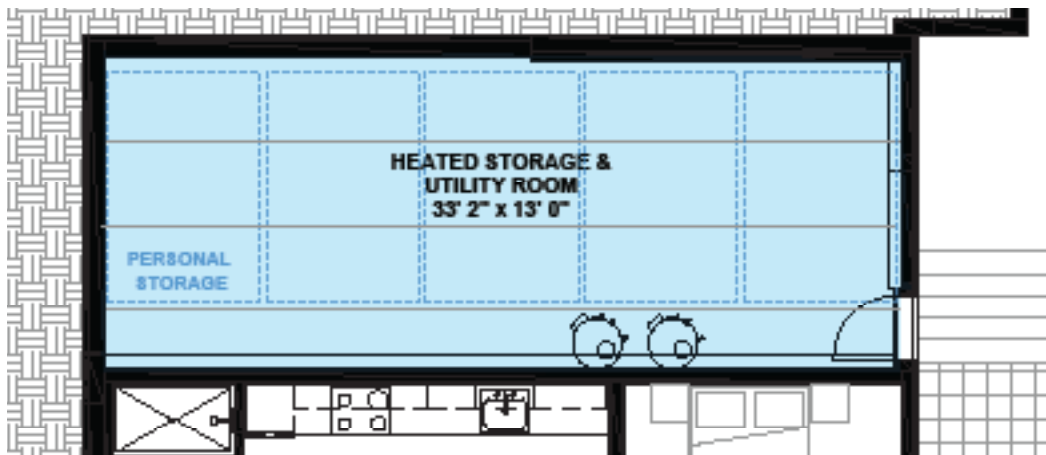
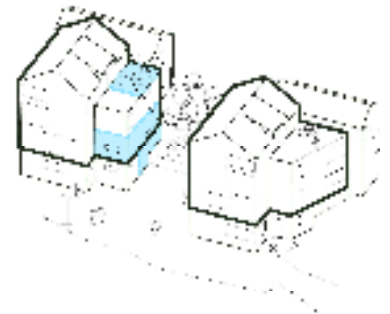
## Common Area - West Lot

- Kitchen + Cafe: Small groups and individuals with 3 small cafe tables (8 ppl)
- Laundry: 2 stackable laundry stations reserved for Suite owners
- View Deck: Territorial Views
- Storage: 5 personal open storage areas (low ceilings)

Note: Both East Lot and West Lot common areas are accessible to entry co-op.



Ground Floor



Basement

# CORVIDAE COOPERATIVE

Common Kitchen - West Lot



West Common Kitchen/Dining Looking South



East Common Kitchen/Dining Looking North

# CORVIDAE COOPERATIVE

Common Kitchen/Laundry & Suite Kitchen - West Lot



West Common Kitchen/Dining Looking West Toward Suite Entrance



Typical Suite Kitchenettes include fridge, sink, dishwasher



# CORVIDAE COOPERATIVE

## Architectural Finishes

### Exterior Finishes



Wood Siding



Windows  
Metal Canopies  
Light Fixtures



Lap Siding



Drought Tolerant  
Plants

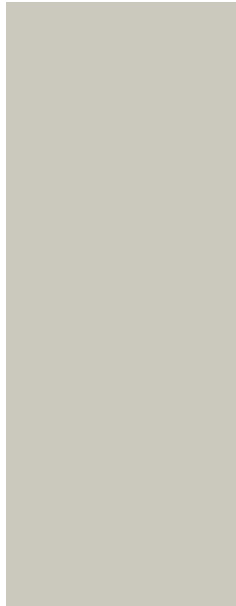


Patio Pavers

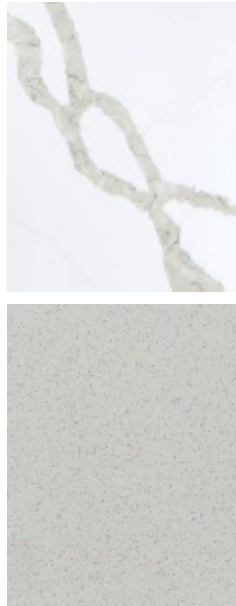
### Interior Finishes



Engineered Wood Flooring



Soft Touch  
Laminate  
Cabinets



Quartz Countertop



Windows



Surrounding Trees



Solid Maple Shelves